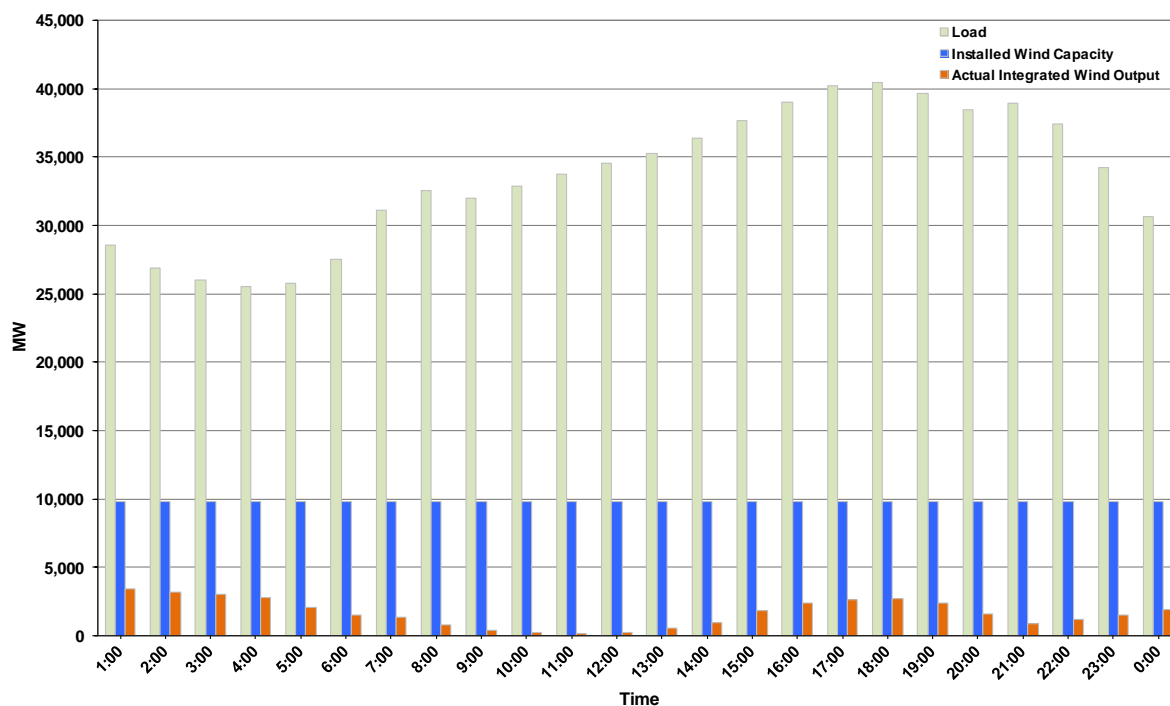




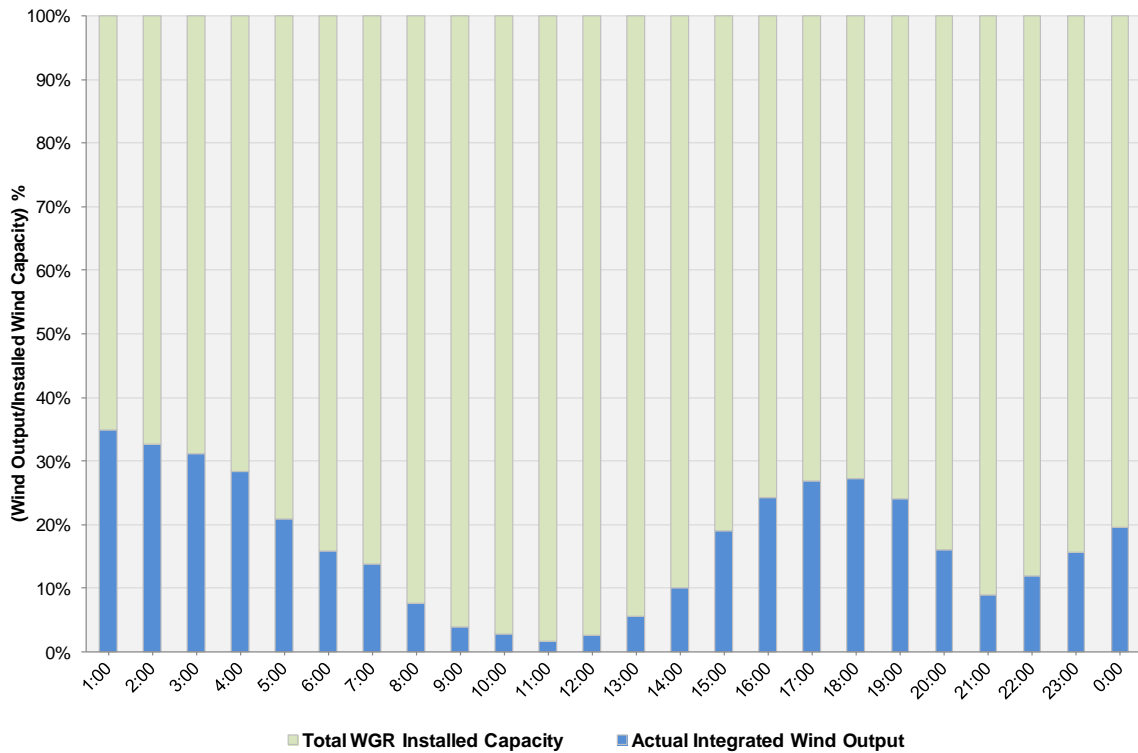
## ERCOT Grid Operations Wind Integration Report: 04/04/12

Peak Load	<b>40,477 MW</b>
Load Peak Hour (HE)	<b>18</b>
Wind over Peak	<b>2,673 MW</b>
Wind Record 03/18/12	<b>7,917 MW</b>
Max Wind Value	<b>3,556 MW</b>
Wind Peak Time	<b>00:12</b>
Wind Integration %	<b>12.24%</b>

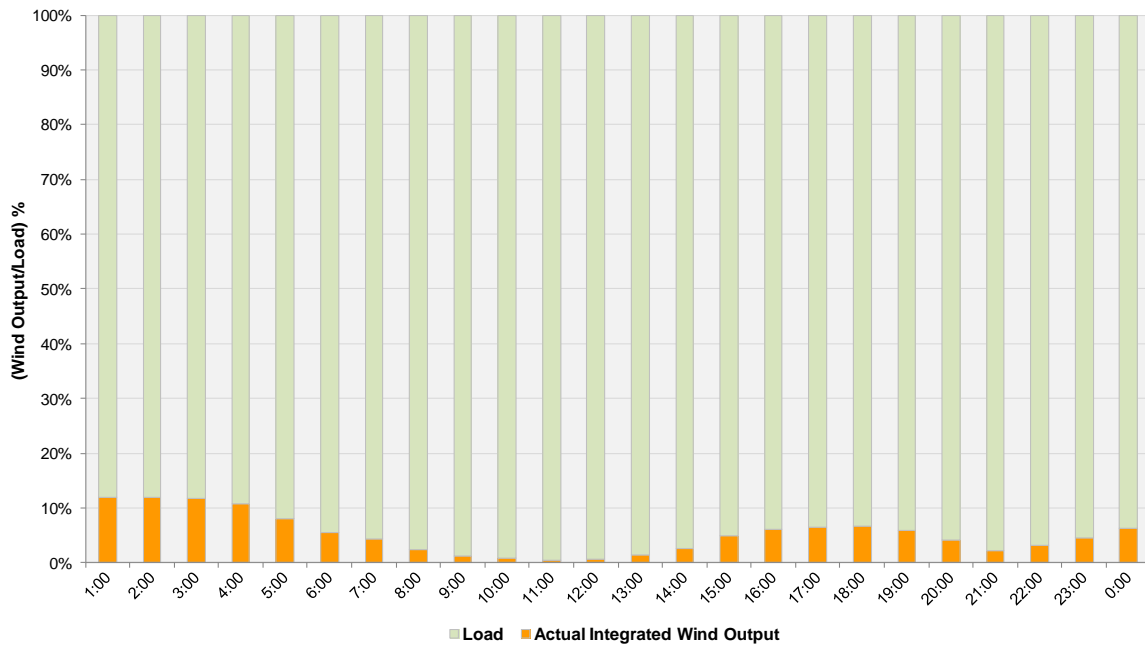
**Hourly Average Actual Load vs. Actual Wind Output  
04-04-2012**



**Actual Wind Output as a Percentage of the Total Installed Wind Capacity**  
**04-04-2012**



**Actual Wind Output as a Percentage of the ERCOT Load**  
**04-04-2012**



ERCOT Load vs. Actual Wind Output 3/28/2012 - 4/4/2012

